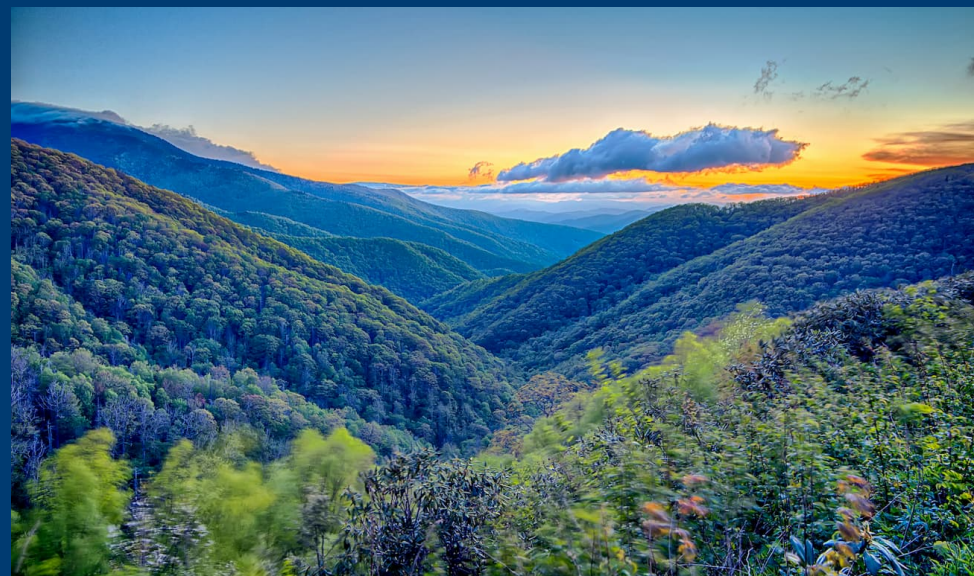


# Rural Opioid and Direct Support Services (**ROADSS**) Model

# Rural Opioid and Direct Support Services (ROADSS) Model



The ROADSS model will increase access to methadone in rural communities where there is limited or no access through the growth of auxiliary clinics that work with a central clinic.

The model will support and encourage opioid treatment programs (OTPs) and other organizations involved in opioid use disorder (OUD) treatment as they take steps to increase access to methadone in rural communities.

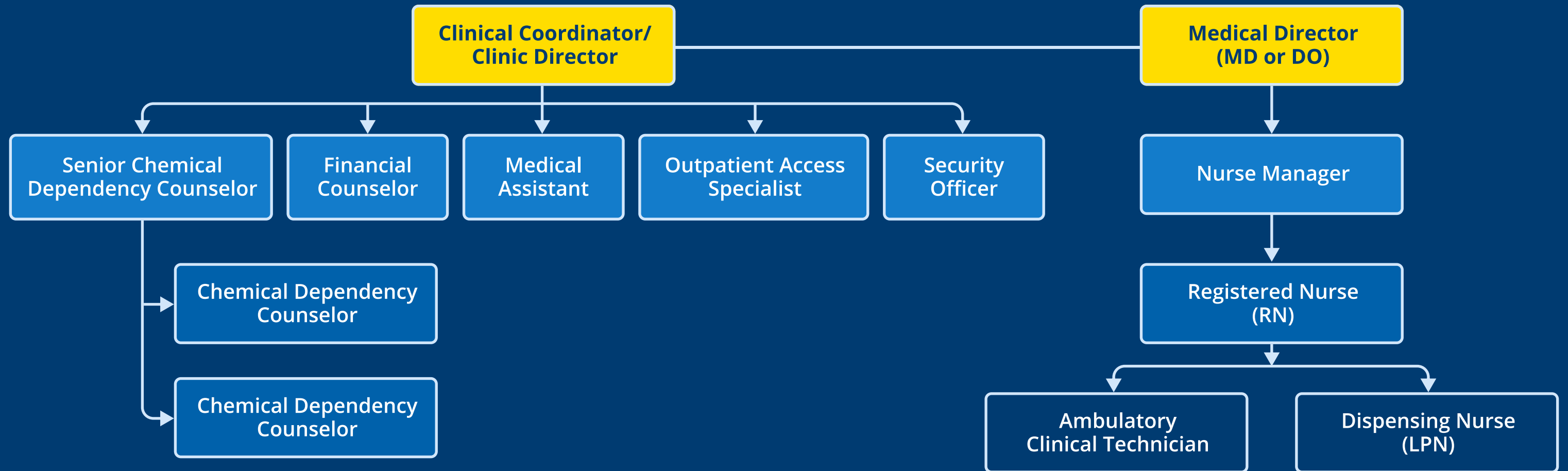
This tool contains examples of positions, organizational structure, and compensation for the ROADSS model. Determinations will depend on the type and size of the organization.

While an OTP has requirements for dispensing, counseling, and other functions that make certain roles necessary, a smaller organization could consider combining the roles of Senior Chemical Dependency Counselor and Chemical Dependency Counselor, as well as Medical Assistant and Outpatient Access Specialist. For a smaller OTP, the role of Ambulatory Clinical Technician could be optional, with those functions performed by the Registered Nurse.

The Medical Director and Clinical Coordinator/Clinic Director lead the medical and operational aspects of the OTP, respectively. The size of the clinic will determine the full-time equivalent of the Medical Director.

# Rural Opioid and Direct Support Services (ROADSS) Model

## Central Clinic Organizational Chart



# Rural Opioid and Direct Support Services (ROADSS) Model

## ROADSS Central Clinic Compensation

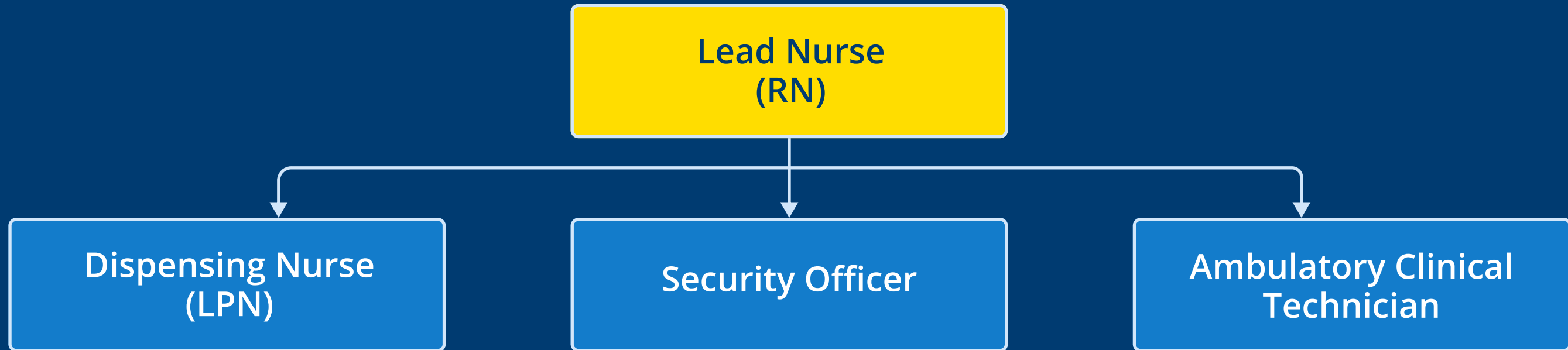


Position Title	Position Role	FTE*	Salary Estimate
Medical Director (MD or DO)	Provider	0.5	\$108,000
Clinical Coordinator/Clinic Director	Program Manager	1	\$75,000
Senior Chemical Dependency Counselor	Individual Therapist	1	\$55,000
Chemical Dependency Counselor	Individual Therapist	2	\$90,000
Financial Counselor	Admin Support	0.5	\$17,000
Medical Assistant	Admin Support	0.5	\$14,000
Outpatient Access Specialist	Admin Support	0.5	\$14,000
Security Officer	Security	0.5	\$20,000
Nurse Manager	Nurse Administrator	1	\$80,000
Registered Nurse (RN)	Staff Nurse	1	\$67,000
Ambulatory Clinical Technician	Nursing Support	1	\$32,000
Dispensing Nurse (LPN)	Nursing Support	1	\$38,000

\*Full-Time Equivalent (FTE)

# Rural Opioid and Direct Support Services (ROADSS) Model

## Auxiliary Clinic Organizational Chart



# Rural Opioid and Direct Support Services (ROADSS) Model

## Auxiliary Clinic Compensation



Position Title	Position Role	FTE*	Salary Estimate
Lead Nurse	Nursing	0.35	\$32,000
Security Officer	Security	0.5	\$20,000
Ambulatory Clinical Technician	Nursing Support	1	\$32,000
Dispensing Nurse (LPN)	Nursing Support	1	\$38,000

\*Full-Time Equivalent (FTE)

# Rural Opioid and Direct Support Services (ROADSS) Model

## HRSA Disclaimer



*This HRSA RCORP RCOE program is supported by the Health Resources & Services Administration (HRSA) of the US Department of Health & Human Services (HHS) as part of an award totaling \$12.3M with 0% financed with non-governmental sources.*

*The contents are those of the author(s) and do not necessarily represent the official views of, nor an endorsement by HRSA, HHS or the US Government.*